

**IRR
NGO 3**

**Date of Report:
7th June 2024**



FITCH SOLUTIONS INDIA ADVISORY PRIVATE LIMITED

(ERSTWHILE IRR ADVISORY SERVICES PRIVATE LIMITED)

NGO GRADING REPORT

People to People Foundation (PPHF)

'IRR NGO 3' indicates NGO with good operational and financial performance. This report is valid till 6th June 2025

Analyst: Perfina Koley (Email: perfina.koley@fitchsolutions.com)

FITCH SOLUTION INDIA ADVISORY PRIVATE LIMITED (FSIAPL)

NGO GRADING SCALE

Non-Government Organization (NGO) Grading is an ordinal measure of the scalability, sustainability and reliability of the NGO's internal processes, controls and governance structure. The NGO Grading does not comment on the debt repayment capacity of the institution and is not a credit rating. FSIAPL grades NGOs on an seven-point rating scale where "IRR 1" symbolizes highest level of performance in relation to other NGOs while "IRR 7" symbolizes poor performance in relation to other NGOs. In order to differentiate between the various NGOs, FSIAPL conducts a detailed assessment of the sustainability, reliability and scalability of the NGO being reviewed. Key factors assessed include Governance, Legal status, Operational Management, Financial growth, Social Impact and Organization structure.

The NGO Grading applies to organizations whose only objective is public service. In case the entity has other activities or is a part of a group involved in various activities, then the grading will be applicable to the public service only. The definitions of the gradings are as follows:

NGO Grading Definition	
IRR 1	Best-in-class NGO with strong operational and financial performance
IRR 2	Very good operational and financial performance
IRR 3	Good operational and financial performance in relation to other NGOs
IRR 4	Average operational and financial performance in relation to other NGOs
IRR 5	Below average operational and financial performance in relation to other NGOs
IRR 6	Weak operational and financial performance in relation to other NGOs
IRR 7	Poor operational and financial performance in relation to other NGOs

KEY GRADING DRIVERS

Governance

- Working and Independence of Board of Directors (BoD) and various committees, including process in place for BoD oversight
- Risk Management frameworks, review mechanism, audit standards, related party transactions, Conduct of Account etc.
- Integrity, Competence, Track record of Management and BoD.

System & Process

- Composition and selection of the staff, number of donors, Financial and operational systems and processes and its robustness
- Background and experience of the team running the processes in the organization

KEY GRADING DRIVERS

Impact

- Purpose of the NGO and the sectors they serve
- Innovative ideas and the ability to experiment
- Project coverage and replicability of the ideas used by the NGOs
- Impact of the projects on the society and vision towards new projects

Financial

- Growth in revenue which is essential for the growth of the NGO
- Survival ratio indicates whether how many days the NGO can sustain without any receipt of donation
- Income utilization ratio displays the efficiency of application of revenue
- Top 5 Donor's contribution/Total Donation show the dependency of the NGO on few donors
- Other key ratios are (Cash and Bank Balance and Endowment Fund)/total assets and current ratio
- Donation growth over the years

TABLE OF CONTENT

Sl. No.	Section	Page No.
1	<u>NGO Overview</u>	5
2	<u>NGO Impact</u>	17
3	<u>Future Strategy</u>	25
4	<u>Management Overview</u>	27
5	<u>Financial Highlights</u>	44
6	<u>Grading Rationale</u>	48
7	<u>Annexures</u>	53

NGO OVERVIEW

NGO OVERVIEW...1

Name of the NGO	People to People Foundation (PPHF)
Registered Office	Second Floor E-45, Lajpat Nagar-III, New Delhi - 110024
Year of Registration	November 15, 2016
Registered with	Ministry of Corporate Affairs (MCA), Government of India (GoI)
CIN	U74999DL2016NPL308172
Act name	Companies Act 2013
Exempted under 80G of IT Act 1961	
Recognized under 12AA	AAICP8514BF20214
NGO Darpan (NITI Aayog) Registration	DL/2018/0189999
CSR Registration Number	CSR00000068
PAN	AAICP8514B
Areas of operation	Sustainable solutions for public health challenges
Areas of service	<ol style="list-style-type: none"> 1. Health System Strengthening 2. Non-Communicable Diseases (NCDs) 3. Women, Adolescent and Child Health 4. Nutrition 5. Infectious Diseases 6. Environmental Health 7. Integrated Development for wellbeing 8. Emergency Health and Disaster Response
Members of Governing Body	6
Auditors	M/s. BHS & Co.
Website	https://pphfglobal.org/

Source: PPHF

NGO OVERVIEW...2

- Registered on 15th November 2016, People to People Health Foundation (PPHF) is a Section 8 company (Non-Profit) with Ministry of Corporate Affairs (MCA), GOI, under of the companies Act 2013.
- PPHF adheres to all statutory compliances like: 12AA, 80G, Darpan ID, CSR1 registration, Six-year Audited financials and ITRs
- PPHF works with companies, governments, non-profits, and diverse organizations to improve the health and well-being of people through locally driven solutions
- PPHF works closely with communities and key actors on sustainable solutions for public health challenges. Key thematic areas of PPHF's intervention are as follows:
 1. Health System Strengthening
 2. Non-Communicable Diseases (NCDs)
 3. Women, Adolescent and Child Health
 4. Nutrition
 5. Infectious Diseases
 6. Environmental Health
 7. Integrated Development for wellbeing
 8. Emergency Health and Disaster Response

NGO OVERVIEW...3

- PPHF has reach over 25 States/ UTs of India including Andhra Pradesh, Arunachal Pradesh, Assam, Bihar, Chandigarh, Chhattisgarh, Delhi, Goa, Gujarat, Haryana, Himachal Pradesh, Jammu & Kashmir, Jharkhand, Karnataka, Kerala, Maharashtra, Meghalaya, Odisha, Punjab, Rajasthan, Tamil Nadu, Telangana, Uttar Pradesh, Uttarakhand, and West Bengal. PPHF has presence over 60 districts.
- PPHF is an ISO 9001:2015 Certified organization
- PPHF develops “win-win” partnerships by leveraging government and corporate resources for greater impact and coverage (PPP Model)

VISION: *‘Transforming lives for improved health and wellbeing through locally driven solutions.’*

MISSION: *‘We envision a world where everyone has equal access to opportunities for better health.’*

INFRASTRUCTURE DETAILS OF NGO CENTERS

PPHF has all properties on rent. The NGO only has IT infrastructure in place for their smooth functioning.

LIST OF SIGNATURE PROGRAMS

List of signature programs undertaken by PPHF is as follows:

1. **'My Health & Wellness Center'**: A model upgraded health facility offering quality services to community.
2. **SCREEN (Strengthen Capacity to Reach Everyone for Effective screening to prevent Non-communicable diseases)**: Intensifying actions to improve outcomes for NCDs
3. **ASPIRE**: Maternal, newborn, child health and nutrition interventions for better service delivery at the community level
4. **SAMARTH**: Improvement of essential primary healthcare service delivery among urban poor
 - Increasing the Quality of Maternal and Newborn Care Services
 - Improving Access to Maternal and Newborn Health Services
5. **Hand Hygiene Behavior**: Influencing Handwashing with Soap (HWWS) behavior among mothers with children
6. **POSHAN**: Improving nutrition of adolescents, mothers, and children
7. **MoDE-C**: Management of Diabetes and Empowerment of Children belonging to underprivileged families

LIST OF ONGOING PROGRAMS...1

1. INTEGRATED DEVELOPMENT FOR HEALTH AND WELLBEING OF PEOPLE THROUGH EMPOWERING COMMUNITIES AND TRANSFORMING LIVES

Key Interventions:

- Constitution of Community level institutions: Formation of VDC & FIGs
- Creating sustainable and alternate livelihood source
- Building disaster resilient communities
- Upgradation of ICDS Centres
- Intervention towards quality education and recovery of drop-outs
- Upgrading basic health facilities-revamping of health institution and facilitation of medical equipment
- Smart school to promote digital literacy
- Promotion of renewable energy: Solar mini home light, solar street-lights and solar operated common area
- Clean drinking water stations and high raised community toilets
- Development of rainwater harvesting tanks

Key Projects:

- As part of PPHF's collaboration with HDFC Bank – Parivartan 'Holistic Rural Development Project in Arunachal Pradesh', the NGO is providing livelihood, health, education disaster management support and solar street-lights to 15 villages in Lohit and Lower Dibang Valley district.

LIST OF ONGOING PROGRAMS...2

- As part of PPHF's collaboration with HDFC Bank – Parivartan 'Holistic Rural Development Project in Arunachal Pradesh', the NGO is providing livelihood, health, education disaster management support and solar street-lights to 15 villages in Lohit and Lower Dibang Valley district.
- As part of the NGO's collaboration with SBI Securities under 'Sustainable Livelihood Initiatives to support wellbeing of Artisans', PPHF is providing weaving training of 100 artisans, dyeing and coloring training of 20 artisans and training of 6 artisans. The artisans will be provided one time support as well as hand-holding support for a sustainable livelihood.

2. HEALTH SYSTEM STRENGTHENING: UPGRADATION OF HEALTH FACILITIES AND LINKING COMMUNITIES TO THE SYSTEM FOR SERVICE UPTAKE

Key Interventions:

- Infrastructure (renovation)
- Essential medical equipment
- Solar electrification
- Upskilling healthcare teams
- Community mobilization

Key Projects:

- In collaboration with Indian Oil Corporation Limited (IOCL), PPHF is supporting **01 PHC** in Mahasamund district, Chhattisgarh.

LIST OF ONGOING PROGRAMS...3

- In collaboration with ITC Limited, PPHF is upgrading **04 PHCs** in Kamrup rural, Assam; **04 PHCs/HWCs** in Howrah, West Bengal; **05 PHCs/SCs** in Haridwar, Uttarakhand and **02 SCs** in Mysuru, Karnataka.
- In collaboration with GE Healthcare, PPHF is supporting **03 PHCs** in urban and rural districts of Bengaluru and **01 PHC** in Raichur district, Karnataka.
- In collaboration with SBI Foundation, PPHF is running **02 MMUs** in Rajasthan and about to start with **03 MMUs** in Odisha.
- As part of the NGO's collaboration with Schneider Electric India Foundation, 'Powering Healthcare Facilities', PPHF supported solar electrification of **08 PHCs** to ensure uninterrupted healthcare service delivery for communities across **08 PHCs/HWCs** in Hardoi district of Uttar Pradesh.

3. STRENGTHENING CAPACITY TO REACH EVERYONE FOR EFFECTIVE SCREENING AND PREVENTION OF NON-COMMUNICABLE DISEASES

- In collaboration with **Boston Scientific, GE Healthcare and Innovaccer**, PPHF is contributing to the NCD screening of people above the age of 30 years across 5 locations in **Bengaluru, Karnataka; Gurugram, Haryana; and Pune, Maharashtra**.
- In collaboration with the **state government of Telangana, and National Health Mission (NHM), and CSR partnership with Sanofi India**, PPHF implemented Project ASPIRE to upskill the capacity of the healthcare professional and test the feasibility of community mobilizers at the urban primary healthcare level for its impact on NCD care services.
 - PPHF's evidence-based advocacy through Project ASPIRE has created a momentum resulting in a government decision where NHM Telangana has received state government approval to hire additional manpower (1540) as Accredited Social Health Activists (ASHAs) in three districts including Medchal-Malkajgiri.

LIST OF ONGOING PROGRAMS...4

- Recently Project ASPIRE has been published in Reliance Foundation and Observer Research Foundation's latest publication, **Ideas, Innovation, Implementation: India's Journey Towards the SDGs**. (https://reliancefoundation.org/sdgs_publication)
- PPHF also had the privilege of presenting an oral presentation, '**Community Mobilizers for NCD Screening: Lessons Learned from a Primary Healthcare Intervention in Urban India**', at the prestigious ICOPH in August 2023.
- PPHF has also collaborated with **Sanofi India** for its Type 1 diabetes mellitus access to health care program since 2021 to provide best-in-class training and educational tools to (a) Diabetologists, (b) Pediatricians, (c) Diabetes educators, (d) Caregivers and (e) Young people with T1D to create standardized care and a network to support **1,428 children** with T1D across 15 states/UTs.

4. IMPROVING THE HEALTH AND WELL-BEING OF URBAN POOR WOMEN, ADOLESCENTS AND CHILDREN (UPTO THE AGE OF 5 YEARS)

- In collaboration with Kolkata Municipal Corporation and Cognizant Foundation, PPHF is implementing an Urban health and RMNCHN initiative, '**SAMARTH - Improving the health and well-being of urban poor women and children**' in urban slums of Kolkata, West Bengal.
- With support from IRCON International Limited, PPHF implemented the '**Community Based Anaemia Prevention And Control Program**' in Bissamcuttack Block of Rayagada District, Odisha. As part of this program, the NGO is providing livelihood support and helping women to create their own kitchen gardens by demonstrating them through community owned model kitchen gardens.
- In collaboration with **GeBBS Healthcare Solutions**, PPHF is working with **women in the reproductive age and adolescents on Maternal and Adolescent Health** in Mulund and Bhandup slum areas of Mumbai.

LIST OF ONGOING PROGRAMS...5

- Supported by **Hindustan Unilever Limited, UK Government, HBCC and Save the Children**, PPHF implemented HBCC 2.0 project intervention to support COVID-19 prevention with a focus on awareness generation, demonstration, and distribution of prevention kits in the community and building resilience to future outbreaks based on the tested package of **handwashing with soap (HWWS) interventions** in Bihar, Rajasthan, Odisha, Uttar Pradesh and West Bengal.
- In collaboration with ITC Limited, PPHF has initiated MNCHN interventions in Kamrup rural, Assam; Howrah, West Bengal; Haridwar, Uttarakhand and Mysuru, Karnataka.

5. OTHER PROGRAMS

I. **AASTHA (Asia-Africa Supply Chain Transform Health Alliance)** (<https://pphfglobal.org/aastha/>)

An initiative by **PPHF** and **Kspire** to create a multi-stakeholder alliance platform of diverse organizations and individuals in the public health and supply chain space

Key Initiatives 2021-22

- Report Release on 'Study of Health and Wellbeing of Truck Drivers in India': – July 2022
- Pan India study on Health and Wellbeing of Truck Drivers in India
- Event – Roadmap for the Safety and Sustenance of Truck Drivers: December 2021
- Vaccination Drive for truck drivers (Haryana, Rajasthan & Odisha): Aug – Sep 2021

LIST OF ONGOING PROGRAMS...6

II. DEESHA (Diabetes (Type 1) Education and Empowerment Strategic Health Alliance) (<https://pphfglobal.org/partnership/deesha/>)

An informal, apolitical, interest group of stakeholders working for Type 1 Diabetes Mellitus Children in India

Key Initiatives

- PPHF convened a series of 3 meetings of stakeholders on Working together to increase financing for Type 1 Diabetes Mellitus children in India.
 - i. First Meeting
 - ii. Second Meeting
 - iii. Third Meeting
- At present, PPHF has 06 action groups: **Financing, Insurance, Livelihood models, Awareness and Education, Access to Medicine and Supply Chain.**

PARTNERS OF PPHF

Following are the partners of PPHF



Source: PPHF

NGO IMPACT

NGO IMPACT...1

Impacts of PPHF are as follows:

Sno.	Year	Name and brief description of the Project	Name of the Donor	Amount of grant	Impact of the project (No. of persons impacted)
		<u>Consultations on "Addressing NCD Program Implementation Challenges in India"</u>			
1	2017	In collaboration with Eli Lilly, PPHF organised 2 regional consultations on NCDs in India in 2017. The purpose of the consultations was to bring together representatives from government, national and international non-governmental agencies, civil societies, policy and program implementers, private sector and others, to exchange and share their experiences and ideas about addressing operational challenges on implementing NCD programs.	Eli Lilly	Rs. 3,204,415	Approx 150 participants
		<u>IDEEL</u>			
2	2018	IDEEL was a four-month graduate level education program that includes 15 days of internship for skills demonstration. The program focused on counselling skills using a patient-centered approach to diabetes self-management education (DSME).	Apollo Sugar	Rs. 60,000	Approx 100 participants
		<u>Conducted Assessment studies on NCDs in 5 states and Dissemination of results</u>			
3	2018	In partnership with Anchal Charitable Trust and GE Healthcare, PPHF released a policy brief on NCDs and led a national NCD rapid formative assessment findings dissemination workshop. Shri Ashwini Kumar Chowbey, Minister of State for Health and Family Welfare announced the findings.	GE Healthcare	Rs. 6,671,910	Approx 60 participants
4	2018	In partnership with United Way Delhi and Eli Lilly, PPHF build the capacity building of community health workers in states of Haryana and Andhra Pradesh. The protocols, materials, tools, and standard operating procedures (SoPs) were adopted and scaled by the Ministry of Health.	Eli Lilly	Rs. 4,859,868	Total trained – 158 Trained -50 (rural) and 28 (urban) active PHCs in Sonipat and 50 (rural) and 30 (urban) active PHCs in Vizag
5	2018	With support from Anchal Charitable Trust, PPHF and SAATH- SAATH Sanofi supported NCD program to strengthen the capacity and skills of the health workforce in the state of Maharashtra.	Sanofi	Rs. 1,028,800	Trained- 151
6	2018	SCREEN stands for 'Strengthen Capacity to Reach Everyone for Effective Screening to Prevent NCDs' and was launched in 2018 aiming at integrated prevention and early detection of NCDs like diabetes, hypertension, cardiovascular diseases and common cancers to contribute towards the national goal of reducing morbidity and mortality due to NCDs.	GE Healthcare, WIPRO Foundation, Anchal Charitable Trust	Rs. 7,900,000	2000 Govt healthcare providers trained. Screened around 20,000 people

Source: PPHF

NGO IMPACT...2

Sno.	Year	Name and brief description of the Project	Name of the Donor	Amount of grant	Impact of the project (No. of persons impacted)
7	2019	SCREEN stands for 'Strengthen Capacity to Reach Everyone for Effective Screening to Prevent NCDs' and aiming at integrated prevention and early detection of NCDs like diabetes, hypertension, cardiovascular diseases and common cancers to contribute towards the national goal of reducing morbidity and mortality due to NCDs. (Continued since 2018)	GE Healthcare, WIPRO Foundation	Rs. 15,000,000	2770 Govt healthcare providers trained, Screened around 25,406 people
8	2019	The purpose of the NCD program was to strengthen the health system and mobilize community for NCD awareness and screening	Sanofi	Rs. 1,654,850	Trained - 701 allied health-care professionals and Mos
9	2019	PPHF in collaboration with Sanofi CSR and NHM Goa conducted NCD trainings for MOs in Goa in the month of December 2019. The trainings focused on Gol's population-based screening guidelines for NCDs (diabetes, hypertension, and cancer) prevention and management.	Sanofi	Rs. 316,250	Trained – 55 people
10	2019	The purpose of the NCD training module was to build the nurse's capacity on NCD programs	AstraZeneca	Rs. 1,538,145	Training module developed
11	2020	COVID-19 Response Wipro- Essential equipments for hospital including handwashing stations	Wipro	Rs. 11,271,979	12,600 people
12	2020	COVID-19 Response Cognizant Foundation Delhi – Consumables and personal protective gear for frontline health workers donated to two Delhi hospitals.	Cognizant Foundation	Rs. 5,011,104	5,000 people
13	2020	COVID-19 Response BD - Consumables and personal protective gear for frontline health workers donated to St George Hospital	BD	Rs. 550,000	500 people
14	2020	COVID-19 Response Cognizant Foundation Mumbai - Consumables and personal protective gear for frontline health workers donated to hospitals in Mumbai	Cognizant Foundation	Rs. 5,010,129	5000 people
15	2020	COVID-19 Response FICCI - Consumables and personal protective gear for frontline health workers donated to hospitals along with ten 5-function ICU beds.	FICCI	Rs. 2,075,150	450 people
16	2020	COVID-19 Response Cognizant Foundation Bangalore – Sample collection kiosk were set up in Bangalore	Cognizant Foundation	Rs. 500,000	72,000 people

Source: PPHF

NGO IMPACT...4

Sno.	Year	Name and brief description of the Project	Name of the Donor	Amount of grant	Impact of the project (No. of persons impacted)
17	2021	ASPIRE Maharashtra Project ASPIRE is aimed at contributing to the national goal of reducing mortality and morbidity due to NCDs with an integrated approach for prevention, early detection, and capacity building for NCD services.	Sanofi India	Rs. 11,000,000	13,860 screened 203 healthcare workers
18	2021	ASPIRE Telangana Project ASPIRE is aimed at contributing to the national goal of reducing mortality and morbidity due to NCDs with an integrated approach for prevention, early detection, and capacity building for NCD services.	Sanofi India	Rs. 11,000,000	69,066 screened 344 healthcare workers
19	2021	Project SCREEN 2.0 SCREEN 2.0 focused on intensifying actions to improve NCD outcomes by leveraging the ongoing efforts of the NCD program at the Block Public Health Centre (BPHC) level	GE Healthcare	Rs. 15,000,000	16,026 people screened 230 HCWs trained
20	2021	HBCC The program aimed to influence the Handwashing with Soap behaviour among mothers with children under five years of age and school children	HUL	Rs. 24,652,518	1,168,648 mothers and school children 12,474 Front Line Workers (FLWs) and schoolteachers trained
21	2021	COVID-19 Protection: Vaccination Drive for Vulnerable People in India With a core belief in community participation, People to People Health Foundation (PPHF) along with AASTHA (Asia-Africa Supply Chain Transform Health Alliance) and Kspire Solutions initiated a drive to address vaccine hesitancy, ensure access to COVID-19 vaccine and protect vulnerable people from this pandemic and further prevent the spread of infection.	Mahindra Rural Housing Finance	Rs. 4,567,992	Odisha – 6,136 Maharashtra – 17,200
22	2021	Meethi Baatein Provide access of treatment to underprivileged Type 1 patients	Sanofi India	Rs. 21,144,525	709 people
23	2021	COVID-19 Response Cognizant Foundation – Pediatric COVID ward, life-saving machines, and consumables	Cognizant Foundation	Rs. 12,940,198	6,000 people
24	2021	COVID-19 Response Hero MotoCorp Ltd – 50 beds Dedicated COVID Care ward in 3 hospitals with consumables and personal protective gear for frontline health workers	Hero MotoCorp Ltd.	Rs. 35,903,549	5,000 people
25	2021	COVID-19 Response LG – Dedicated COVID care centre with Ambulance in Delhi, and 25 Bedded ICU in Bangalore	LG	Rs. 32,078,946	500 people

Source: PPHF

NGO IMPACT...5

Sno.	Year	Name and brief description of the Project	Name of the Donor	Amount of grant	Impact of the project (No. of persons impacted)
		<u>COVID-19 Response</u>			
26	2021	Mahindra and Mahindra Financial Services Ltd – Equipment to support COVID care centre in 2 hospitals	Mahindra and Mahindra Financial Services Ltd	Rs. 10,370,000	4,500 people
		<u>COVID-19 Response</u>			
27	2021	Bosch – Strengthening of Pediatric ICU setup	Bosch	Rs. 4,926,965	450 people
		<u>COVID-19 Response</u>			
28	2021	Cognizant Foundation – Macerators & consumables in one hospital and supported special Newborn Care Unit with equipment and consumables in another	Cognizant Foundation	Rs. 41,195,240	2,000 people
		<u>ASPIRE</u>			
29	2022	With a focus on reducing morbidity and mortality due to NCDs, the project aims to upskill the capacity of the healthcare professional and test the feasibility of community mobilizers at the urban primary healthcare level for its impact on NCD care services.	Sanofi India	Rs. 10,000,000	390,000 people
		<u>Sanofi's Social Impact Program for Type 1 Diabetes</u>			
30	2022	Provide access of treatment to underprivileged Type 1 patients	Sanofi India	Rs. 47,097,417	1,200 patients
		<u>SCREEN 2.0:</u>			
31	2022	SCREEN 2.0 focused on intensifying actions to improve NCD outcomes by leveraging the ongoing efforts of the NCD program at the Block Public Health Centre (BPHC) level	GE Healthcare	Rs. 6,898,800	23,000 screened 571 HCWs trained
		<u>My Health (Phase I)</u>			
32	2022	PPHF initiated the project with an aim to improve access to services and adopt appropriate behaviours related to Health, Nutrition, and WASH among mothers, children, and adolescents in the slum areas of Bhandup 'S' ward and Mulund 'T' ward, Mumbai, Maharashtra.	Gebbs Healthcare Solutions Private Limited	Rs. 3,305,011	5,000 people
		<u>SAMARTH</u>			
33	2022	The overall goal of SAMARTH is to contribute on government's efforts- reduction in maternal and infant mortality	Cognizant Foundation	Rs. 11,676,500	100,000 people
		<u>Community-Based Anaemia Prevention and Control Program for Women (Phase I)</u>			
34	2022	The project is in response to the high prevalence of anaemia among women and children in the area and focuses on contributing to existing government efforts to prevent and control anaemia with a special focus on iron deficiency anaemia.	IRCON International Limited	Rs. 2,500,000	880 people

Source: PPHF

NGO IMPACT...6

Sno.	Year	Name and brief description of the Project	Name of the Donor	Amount of grant	Impact of the project (No. of persons impacted)
		<u>HBCC 2.0</u>			
35	2022	HBCC 2.0 project intervention is designed to support COVID-19 prevention with a focus on awareness generation, demonstration, and distribution of prevention kits in the community and building resilience to future outbreaks based on the tested package of handwashing with soap (HWWS) interventions in India.	Save the Children	Rs. 3,827,278	180,000 people
		<u>Breathe Easy</u>			
36	2022	To support cases of a rare disease called Spinal Muscular Atrophy (SMA), PPHF facilitated the supply of BiPAP machines to designated hospitals across five states.	Cipla Foundation	Rs. 2,282,500	-
		<u>Assam Flood Response</u>			
37	2022	With the goal to provide equal access to opportunities for better health during Assam Floods 2022, PPHF joined hands with Medreich and a local NGO, Swastikam, to provide support to the flood victims in two of the worst affected districts Kamrup Rural and Nalbari with essential health education, medicine, water treatment, hygiene promotion and distribution of survival kits as short-term interventions.	Medreich Limited	Rs. 1,000,142	2,492 people
		<u>Powering Healthcare Facilities</u>			
38	2022	PPHF in collaboration with SEIF upgraded 08 PHCs with solar power backup across the HarDOI district of Uttar Pradesh, as an alternative power source to provide uninterrupted healthcare services to the poor and underprivileged people in the area.	Schneider Electric India Foundation	Rs. 7,964,000	260,000 people
		<u>ASPIRE</u>			
39	2023	With a focus on reducing morbidity and mortality due to NCDs, the project aims to upskill the capacity of the healthcare professional and test the feasibility of community mobilizers at the urban primary healthcare level for its impact on NCD care services.	Sanofi India Limited	Rs. 2,000,000	180,000 people
40	2023	<u>Sanofi's Social Impact Program for Type 1 Diabetes</u> Provide access of treatment to underprivileged Type 1 patients	Sanofi India Limited	Rs. 48,885,702	1,428 people

Source: PPHF

NGO IMPACT...7

Sno.	Year	Name and brief description of the Project	Name of the Donor	Amount of grant	Impact of the project (No. of persons impacted)
41	2023	<u>PRANAA</u> PPHF with the support of the Haryana and Maharashtra state governments, National Health Mission (NHM) and Boston Scientific Company, is working towards strengthening healthcare services like prevention, health promotion, early detection, and management of NCDs and their risk factors in Gurugram and Pune.	Boston Scientific India Private Limited	Rs. 8,629,600	3,806 people
42	2023	<u>PRANAA</u> The project aims to strengthen healthcare services like prevention, health promotion, early detection, and management of NCDs and their risk factors	GE BE Private Limited	Rs. 5,708,800	1,652 people
43	2023	<u>SBI Sanjeevani Clinic on Wheels</u> SBI Sanjeevani Clinic on Wheels provides health services to ensure better access and timely help to the underserved communities at their doorstep in the difficult-to-reach 40 villages of Kishanganj and Shahabad Block of Baran District in Rajasthan.	SBI Foundation	Rs. 16,869,573	23,686 people
44	2023	<u>My Health (Phase II)</u> The My Health project envisions to bring about effective change in the lives of young adolescent girls, pregnant women, lactating mothers, up to 2-year children by creating awareness on the crucial topics of health, nutrition, and WASH and linking them with the existing government services.	Gebbs Healthcare Solutions Private Limited	Rs. 2,704,900	4,000 people
45	2023	<u>Community-Based Anaemia Prevention and Control Program for Women (Phase I)</u> The project was introduced in response to the high prevalence of anaemia among women and children in the area and focuses on contributing to existing government efforts to prevent and control anaemia with a special focus on iron deficiency anaemia.	IRCON International Limited	Rs. 2,500,000	2,117 people
46	2023	<u>SAMARTH</u> Goal of this Project is Improve the health and well-being of urban poor women and children. Outcome of this project to Increase community awareness and MNCHN service uptake in project areas.	Cognizant Foundation	Rs. 8,435,900	6,465 people
47	2023	<u>Holistic Rural Development Programme (HRDP)</u> HRDP aims to uplift 2500 marginalized tribal individuals in 15 villages by 2026, focusing on skill enhancement, livelihood creation, healthcare, education, and sustainable resource management.	HDFC Bank Limited	Rs. 16,909,797	2,500 people

Source: PPHF

NGO IMPACT...8

Sno.	Year	Name and brief description of the Project	Name of the Donor	Amount of grant	Impact of the project (No. of persons impacted)
		Project KAYAKALP			
48	2023	The goal is to align the facility with Ayushman Bharat, modernize equipment, train staff, and raise community awareness about health services available in the PHC.	Indian Oil Corporation Limited	Rs. 5,497,620	749 people
		Sustainable livelihood initiatives to support wellbeing of Artisans			
49	2023	Through targeted training in new designs, coloring and dyeing, and weaving techniques, the project aimed to empower artisans, preserve cultural heritage, and ensure economic sustainability	SBICAP Securities Limited	Rs. 2,462,350	126 people
		Focused Development Program			
50	2023	The machines supported through this project aimed to address the critical need for local access to diagnostic services, as patients often travel long distances, incurring higher costs and delays.	HDFC Bank Limited	Rs. 18,982,595	-
		Strengthening of Government Health Facilities (Phase I)			
51	2023	The infrastructure development support through this project is expected to be ideal for delivering the essential package of primary health care support to the community around to bridge the gaps in existing health care services by government and other private providers.	GE BE Private Limited	Rs. 25,417,558	17,901 people
		HP Floods Humanitarian Response 2023			
52	2023	As a part of relief efforts, PPHF with support from Medreich and local support from Doers coordinated a joint effort to distribute the 997 relief kits to families situated in the severely affected districts of Himachal Pradesh.	Medreich Limited	Rs. 3,500,000	997 people

Source: PPHF

FUTURE STRATEGY

FUTURE STRATEGY

BUSINESS CONTINUITY PLAN

Following is the financial projection of expenditures of PPHF for the FY25:

S. No.	Name	Amount (INR Lakh)
1	HDFC Bank Limited	600.0
2	Sanofi India Limited	500.0
3	Ericsson	400.0
4	SBI Foundation	300.0
5	ITC Limited	300.0
6	REC Limited	154.0
7	IOCL	137.0
8	GE BE Private Limited	40.0
9	Gebbs Healthcare Solutions Private Limited	35.0
10	IRCON International Limited	25.0
	Total	2,491.0

Source: PPHF

MANAGEMENT OVERVIEW

GOVERNANCE STRUCTURE...1

PPHF ADVISORY COUNCIL



Source: PPHF

GOVERNANCE STRUCTURE...2

PPHF has 16 Advisory Council Members. Details of the advisory council members are given below:

Sno.	Name	Designation	Work Experience
1	Dr. S. K. Nanda	Members Advisory Council	Indian Administrative Services (Ex-IAS)
2	Mr. Sunil Kumar Muttoo	Members Advisory Council	Indian Administrative Services (Ex-IAS)
3	Dr. Shreeranjana	Members Advisory Council	Indian Administrative Services (Ex-IAS)
4	Dr. Sharad Onta	Members Advisory Council	Country Co-ordinator Peoples' Health Movement
5	Dr. Raj Shankar Ghosh	Members Advisory Council	Founding Member Quality, Equity, and Inclusiveness (QEI) in Public Health
6	Prof. Prashant Yadav	Members Advisory Council	Chair - AASTHA
7	Ms. Cheena Malhotra	Members Advisory Council	Senior Health Specialist Global Health - UK
8	Ms. Linda Heitzman	Members Advisory Council	Co-Founder at Bertzman Social Ventures
9	Ms. Miriam Wardak	Members Advisory Council	Senior VP, Human Resource, Interos
10	Dr. Anoop Khandelwal	Members Advisory Council	Co-founder & CEO Kspire Solutions
11	Mr. Soumyakant Dwivedy	Members Advisory Council	Director - Regional Supply Chain Excellence & Distributor Management, Greater Asia, BD
12	Mr. Suresh Vedula	Members Advisory Council	Head of Partnerships Google
13	Dr. Neeru Johri	Members Advisory Council	Head, Department of Media and Communication Studies, JIMS
14	Mr. Prabal Chakraborty	Members Advisory Council	Former VP & MD of Boston Scientific India Private Ltd.
15	Dr. Gayatri Mishra Oleti	Members Advisory Council	Charitable Head, L&T Public Trust
16	Mr. Nikhilesh Maity	Members Advisory Council	Rural Development Advisor

Source: PPFH

...contd.

GOVERNANCE STRUCTURE...3

PROFILE OF THE ADVISORY COUNCIL MEMBERS

Brief details of the 16 advisory council members of PPHF are as follows:

1. **Dr. S. K. Nanda**: Dr. S. K. Nanda, IAS, last served as Chairman & Managing Director of Gujarat State Fertilizers and Chemicals Limited (GSFC), Vadodara is a seasoned civil servant of Gujarat. A Post-Graduate in political Science, Dr. Nanda holds a Doctorate in Philosophy in Rural Economics in addition to being a post-graduate in Law. Dr. Nanda was a lecturer in the University of Delhi when he joined the coveted Indian Administrative Service in 1978 and was inducted in the Gujarat cadre. In over three and a half decades, Dr. Nanda has served with distinction presiding over a cross section of departments before being elevated as Principal Secretary to the Home Department before he was appointed to head the GSFC.
2. **Mr. Sunil Kumar Muttoo**: Born, brought up and educated at Delhi, Shri Suneel Kumar Muttoo took his Masters in History from Delhi University in 1975. He was selected for the Indian Administrative Service, which he joined in July 1977 and was allotted to the Uttar Pradesh State Cadre. Shri Muttoo served in the Government of Uttar Pradesh at various locations – Bareilly, Ballia, Varanasi, Lucknow, Pilibhit and Allahabad in various capacities – notably, magisterial and revenue administration, industrial development, cooperatives, district administration, civic administration, stamps and registration, sericulture promotion and management of a public sector undertaking dealing in supply of agriculture inputs to farmers. On formation of the new State of Uttarakhand, Shri Muttoo worked in the Departments of Women Empowerment and Child Development, Social Welfare, Revenue, Disaster Management, Culture and Charitable Affairs as Secretary, Principal Secretary and Additional Chief Secretary. He was the State's Chief Resident Commissioner at Delhi and Chairman of the Board of Revenue when he retired in 2014.

GOVERNANCE STRUCTURE...4

3. **Dr. Shreeranjana**: Dr Shreeranjana had long and distinguished career of 32 years in the Indian Administrative Service and held key positions of responsibility and leadership in various departments and Ministries in both the State Government and Government of India. He was also Joint Secretary for 5 years in the Ministry of Woman and Child Development and was responsible for policy formulation and implementation of government programmes pertaining to child development and child rights, nutrition, early childhood care and education, women empowerment, international cooperation, etc. He also served for about 2 years as Joint Secretary and Additional Secretary to the Govt. of India as Deputy Director General (DDG) in the Unique Identification Authority of India (UIDAI), and was also empanelled as Secretary to Government of India.
4. **Dr. Sharad Onta**: Present position Dr. Sharad Onta, a medical graduate (MD) in 1984 from Leningrad – former Soviet Union (USSR), has master degree in public health (MPH) from UK in 1992. He completed Ph D in 1999 from Copenhagen, Denmark in health system research. Retired faculty of Tribhuvan University, Nepal He is founding General Secretary of Nepal Public Health Foundation (NPHF). Chair, Resource Centre for Primary Health Care, an NGO President, Physicians for Social Responsibility Nepal (PSRN) Country Coordinator, People's Health Movement, Nepal Previous positions Dr. Onta was Professor and Head of the Department of Community Medicine and Public Health of Institute of Medicine, Tribhuvan University, Kathmandu. His responsibilities included teaching International Health to MPH students, supervising public health master and Ph D students.
5. **Dr. Raj Shankar Ghosh**: Dr. Raj Shankar Ghosh is a physician with three decades of experience in policy, planning and delivery of public health programs. His primary interests are in climate health, primary health care, infectious diseases, and vaccine delivery. Dr. Ghosh is a founding member of the Quality, Equity, and Inclusiveness (QEI) initiative at Department of Management Studies, IIT Delhi Dr. Ghosh has worked in West Bengal State Health Services as a Medical Officer in a Primary Health ...contd.

GOVERNANCE STRUCTURE...5

in a Primary Health Centre, as a Regional Coordinator in the National Polio Surveillance Project of World Health Organization and as Director, Immunization for South Asian Region at PATH India office. His most recent assignment was as Senior Advisor, Immunization at the India office of Bill & Melinda Gates Foundation.

6. **Prof. Prashant Yadav**: Prof. Prashant Yadav is a globally recognized scholar in the area of healthcare supply chains. He is the author of many peer-reviewed scientific publications, and his work has also been featured in prominent print and broadcast media including The Economist, The Financial Times, Nature, and BBC. Outside academia, Yadav works closely with governments and global organizations in the area of policy and investment strategy design for healthcare supply chains. He currently works as Strategy Leader-Supply Chain at the Bill & Melinda Gates Foundation. Yadav serves on the advisory boards of many global organizations and social enterprises. He has been invited for expert testimony on the issue of medicine supply chains in the US Congress and legislative bodies in other countries.

7. **Ms. Cheena Malhotra**: Cheena is a public health professional with a specialization in public health, policy advocacy, non-communicable diseases (NCDs), nutrition, capacity building, program management and resource mobilization. She leverages her personal and professional experiences to build lasting relationships and provide strategic solutions to create resilient and smart health systems. She has been providing technical and managerial leadership to health programs for over 15 years, supports to improve health outcomes in developing countries, advance health policy to improve the enabling environment for equitable and sustainable health services, supplies and delivery systems. She brings a cross-country learning experience of contextualizing different programs from west to eastern settings. Successfully led and designed implementation strategies and policy advocacy programs across multiple countries.

GOVERNANCE STRUCTURE...6

8. **Ms. Linda Heitzman**: Linda is known as a creative, strategic leader who leverages her personal and professional experiences to build lasting relationships, solve tough problems and to identify and seize strategic opportunities. She has a long history of providing strategic advice to support profitable growth through market expansion and organizational effectiveness. Linda has advised a wide range of organizations from Fortune 50 life science and healthcare companies to an international non-governmental global health organization. Linda recently retired from Project HOPE where she served as the Executive Vice President of Global Health. Prior to joining Project HOPE, she held senior positions at both Deloitte Consulting LLP and Ernst & Young Management Consulting after beginning her career in public service..

9. **Ms. Miriam Wardak**: Miriam Wardak joined Interos in February of 2020 as Senior Vice President, Human Resources to establish the company's talent framework for a sustainable scale-up operation. Wardak is a talent focused executive with experience in leading Human Resources teams in public and private sectors to deliver results, optimize organizational performance and maximize engagement. Wardak joins Interos as a proven leader in building start-ups, enabling growth within pre-IPO, post-IPO and Fortune 500 companies. Most recently Wardak was leading the People's Operation function at Repairify Inc. a hyper-growth company located in Plano, Texas. Prior to this, at Project HOPE, a global health development organization, Wardak was responsible for Finance, IT, Human Resources and Facilities operations. .

10. **Dr. Anoop Khandelwal**: Dr. Anoop Khandelwal is a supply chain and management professional with over 35 years' working experience in the industry in India and overseas. He is a Mechanical Engineer with post-graduate in Production Management and holds a post-doctorate degree. He initiated his career with HCL, in Office Automation and IT space. Thereafter, after a brief stint in the Textiles industry, in Vardhman Spinning Mills as VP Operations, he moved to Hewlett Packard (HP) as India...contd.

GOVERNANCE STRUCTURE...7

Supply Chain & Logistics Head, where he oversaw its growth in India as a premier Printer and IT company. Post HP, he joined UTStarcom, as the designated Chief Operations Officer. He directly managed the execution and rollout of multi-play telephony equipment of BSNL across more than 500 locations in India. He joined Becton Dickinson India (BD) Operations team to address cost optimization initiatives in Supply Chain operations handling one of the largest projects of Distribution Network optimization. Dr. Khandelwal is currently running his start-up Kspire Solutions LLP as Co-founder and CEO providing online mentoring services, project consultancy for commercial ventures, and supply chain interventions in public health supply chain arena.

11. **Mr. Soumyakant Dwivedy:** Mr. Soumyakant has over 20 years of experience in supply chain and operations with expertise in cross functional leadership, change management, implementing process improvements and skill development. He has exposure to Healthcare, Consumer Electronics, FMCG, Shipping and Manufacturing sectors. Currently, he heads the Regional Supply Chain Excellence & Analytics, Greater Asia/APAC Becton Dickinson, Singapore. Prior to this, he was heading the Supply Chain for BD South East Asia & India and also worked with Nokia, Philips, Cavinkare where he handled various supply chain/business operations roles. He has also led Global Health for South East Asia apart from Supply Chain responsibilities. Additionally, Mr. Soumyakant is an advisor at PPHF and focusses on building capacity in the area of health systems strengthening and support for 'health, wellness and safety' of transport workers. He holds a mechanical engineering degree from BIT, Sindri and MBA from XIM, Bhubaneswar.
12. **Mr. Suresh Vedula:** Mr. Suresh has over three decades of corporate experience in the IT/telecom sectors and has worked for brands such as Motorola, Nokia, Wipro and most recently led the Business development and Partnerships at Google India. He has built teams and led new business development in enterprise sales, retail channels and e-commerce. Along the way, he has developed..contd.

GOVERNANCE STRUCTURE...8

expertise in complex contract negotiations, scaling businesses from scratch and mentoring people. An active investor in start-ups, he's a visiting faculty at premier institutions such as IIMs. He holds an MBA from IIM-B and an engineering degree from NIT-K. Mr Suresh Vedula is a certified life coach..

13. **Dr. Neeru Johri:** Professor Dr. Neeru Johri, Head, Department of Media Communication Studies at JIMS, Vasant Kunj, blends more than two decades of experience both in academics, the social sector, and industry. She also has experience of working in the Social Sector for more than a decade in the area of Behaviour Change Communication and Policy Formulation related to Maternal Child Health Nutrition and Delaying Age of Marriage in Jharkhand with both the Government and International Organizations (USAID funded projects, CARE, DFID, UNICEF). She has contributed actively to designing Training Modules on Life Skills for Adolescent Girls, Reproductive Health, Counseling, and Skilled Birth Attendant and advocacy forums. She has also been a Compeer with AIR & Doordarshan. Dr. Neeru Johri is also the Managing Editor of Mass Communicator: International Journal of Communication Studies since 2012. She is also in charge of the generation of content for Radio JIMS, Vasant Kunj 90.4 MHz.
14. **Mr. Prabal Chakraborty:** Prabal Chakraborty was the Vice President and Managing Director of Boston Scientific India Private Ltd for over 7 years. He comes with a rich experience of over 27 years in Medical Device industry. His forte lies in launching new businesses, leading large teams and developing leadership pipeline. He has led BSCI in setting the vision, strategy and launch of the Powered To Win Strategy. He held several leadership positions in different industry bodies and helped in shaping the healthcare environment in India : Chairman of the Medical Device Committee of American Chamber of Commerce in India (AMCHAM), Co-Chair of Confederation of Indian Industry (CII), Indian Advisory Council Member of U.S.-India Business Council (USIBC), and Director at Medical Technology Association of India (MTAI).

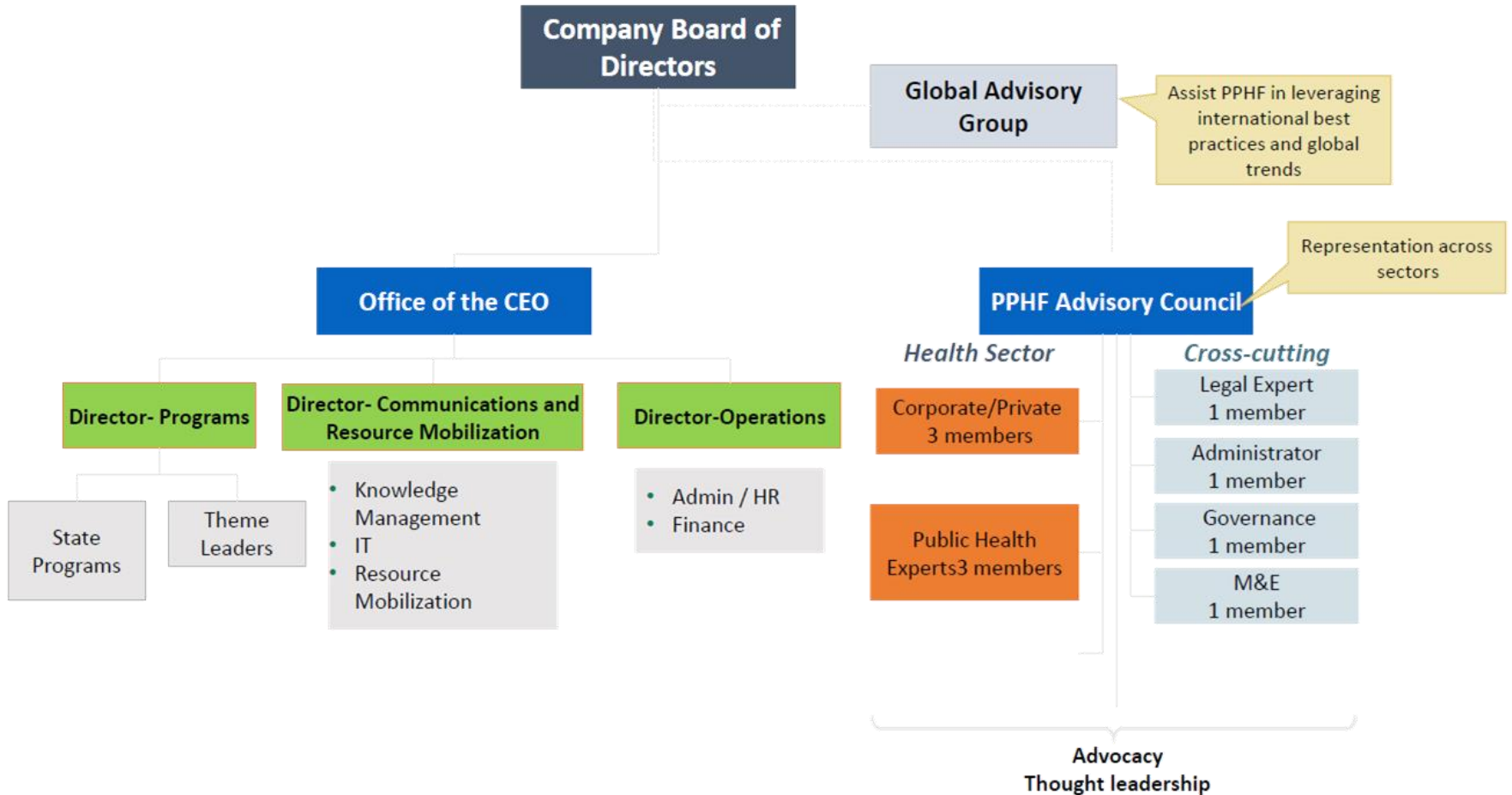
GOVERNANCE STRUCTURE...9

15. **Dr. Gayatri Mishra Oleti:** Gayatri M Oleti, Joint General Manager, at present Heading Operations for Larsen & Toubro Public Charitable Trust. She holds a Ph. D degree in Population Studies, MBA, Xavier Institute of Management, Bhubaneswar India, MSC, Social Policy and Planning, London School of Economics. Gayatri implemented large-scale public health programmes supported by USAID, World Bank and DFID, Gates Foundation and Children Investment Fund Foundation-UK in reproductive, sexual, maternal and child health domain. At present, she is leading a multifunctional team and managing the 300 Cr portfolio of L&T Public Charitable Trust to reach out to five million beneficiaries across five states in India with comprehensive development programmes with a focus on access to primary health care and education. Gayatri covers a wide range of social sectors i.e., public health, system strengthening, improving access to primary care, livelihood, education, digital and financial inclusions leading to comprehensive community development.

16. **Mr. Nikhilesh Maity:** Mr. Nikhilesh Maity is a seasoned professional with 30 years of experience in the social sector, specializing in health and hygiene. Currently serving as the Director of Jan Shikshan Sansthan since 2003, he has made significant contributions to organizations such as Singbhoom Gram Unnayan Samiti, Shramjeevi Unnayan, Mind Fellowship of Priya, and KVGK (Usha Martin CSR). His expertise extends to skill training, having positively impacted thousands of lives in Jharkhand and Chhattisgarh. As a dedicated Board member, Mr. Maity brings valuable leadership and passion for social welfare to the organization.

GOVERNANCE STRUCTURE...10

PPHF ORGANIZATIONAL STRUCTURE



Source: PPHF

GOVERNANCE STRUCTURE...11

PPHF has 6 Board Members. Details of the board members are given below:

Sno.	Name	Designation
1	Dr. Anoop Khandelwal	Board Members
2	Dr. Neeru Johri	Board Members
3	Ms. Cheena Malhotra	Board Members
4	Dr. Gayatri Mishra Oleti	Board Members
5	Mr. Nikhilesh Maity	Board Members
6	Dr. Laxmikant Palo	Board Members

Source: PPFH

PROFILE OF THE BOARD MEMBERS

Brief details of the 6 board members of PPFH are as follows:

1. **Dr. Anoop Khandelwal**: [please refer page 33]
2. **Dr. Neeru Johri**: [please refer page 35]
3. **Ms. Cheena Malhotra**: [please refer page 32]
4. **Dr. Gayatri Mishra Oleti**: [please refer page 36]
5. **Mr Nikhilesh Maity**: [please refer page 36]

...contd.

GOVERNANCE STRUCTURE...12

- 6) **Dr Laxmikant Palo**: Dr Laxmikant Palo is the Chief Executive Officer of PPHF with a strong track record of 29 years as a Program Leader, Technical Advisor of development programs across a diverse range of international organizations like Project HOPE, Save the Children, USAID, IntraHealth International, PATH, FHI360, and UK-AID. Dr Palo has successfully provided technical, fiscal, strategic and operations leadership in uniquely demanding environments. Dr Palo has extensive experience in program planning and management, evidence-based policy advocacy, partnership management, providing technical assistance to government and project implementing partners. His geographic expertise ranges from India and other parts Asia, to Africa, Europe and the United States. On the academic front, Dr Laxmikant has a Ph.D. in Public Health.

GOVERNANCE STRUCTURE...13

PPFH has 24 management team members. Details of the management team members are given below:

Sno.	Name	Designation
1	Dr. Laxmikant Palo	Chief Executive Officer
2	Mr. Varghese C Joseph	Director – Operations
3	Dr. Sona Deshmukh	Director – Programs
4	Mr. Chandra Nath Mishra	Director – Programs
5	Mr. Alok Chandra Mohanty	Director – Programs
6	Dr. Antara Dhargupta	Program Officer
7	Dr. Mounika Pydipalli	State Program Manager
8	Mr. Ajay Pal	State Program Manager
9	Mr. Mani Joshi	Partnerships Officer
10	Ms. Akshitha Dandu	Project Officer - MEL
11	Mr. Tanmaya Satpathy	Project Manager
12	Ms. Ifra Yusuf	Program Manager
13	Ms. Krittika Banerjee	Program Manager
14	Mr. Nitin Bhardwaj	Finance and Grants Manager
15	Mr. Chethan HB	Project Officer
16	Ms. Pinky Dutta Medhi	Project Manager
17	Ms. Arushi Kaur	Lead – Strategic Partnerships & Communications
18	Usman Siddiqui	Manager – Programs And Communications
19	Mr. Pritam Shastri	Program Officer Communications
20	Mr. Aakash Meena	Project Coordinator
21	Mr. Krishna Jagtap	Implementation and Monitoring Officer
22	Mr. Shashank Dwivedi	Monitoring and Evaluation And Documentation Specialist
23	Mr Ashok Thakur	Finance and Administration Officer
24	Ms Mansi Khandelwal	Finance, Grants Management & Procurement Officer

Source: PPFH

GOVERNANCE STRUCTURE...14

DETAILS OF GOVERNANCE

- PPHF is actively managed by Dr. Anoop Khandelwal, Dr. Neeru Johri, Ms. Cheena Malhotra, Dr. Gayatri Mishra Oleti, Mr. Nikhilesh Maity and Dr. Laxmikant Palo. There are no independent board members.
- All 6 board members of PPHF have voting rights. Board meetings were held five times a year in FY24 and every time a resolution is passed. Special meetings can be called at any time as per requirement.
- **Details of Board meetings:** Board meeting for FY24 was held on 1st April 2023, 15th May2023, 4th October 2023, 19th February 2024 and 23rd February 2024. The Governing Board sets the strategic direction and ensures that NGO's work remains responsive to community needs.
- Last AGM was held on 30th September 2023
- **Details of employees/ volunteers:** The NGO has 38 full time employees and hire volunteers on project basis.
- **Details of MIS and reports:** PPHF has robust support system in terms of MIS reporting.
- **External Auditor:** PPHF is associated with M/s. BHS & Co.. The external auditor does statutory audit on yearly basis and project audit on need basis. The NGO does not have any internal audit system.

GOVERNANCE STRUCTURE...15

- **Details of various policies adopted by the NGO:** PPHF has adopted various policies, for the smooth running of the NGO including:
 - Hiring policy
 - HR Policy
 - Travel policy
 - Financial Policy
 - Procurement Policy
 - Whistleblower Policy
 - Child Protection Policy
 - Sexual Harassment Policy
 - Code of Ethic/ Conduct or Anti Bribery Policy

DETAILS OF COMMITTEES

1. **Child Protection Committee (CPC):** To receive and effectively deal with child abuse complaints, a Child Protection Committee has been constituted by PPHF. The CPC consists of three members – **Executive Director, a senior staff member – Programs Director and Operations Director.** A panel of three members is required to be present for the proceedings to take place. Operations Director will act as CPO to ensure the implementation of the policy.

The CPC focuses only on the complaints/ suggestions received on child safety violations/ abuse and not on any administrative issues. It ensures the concerns are addressed and closed within a specified time. The committee maintains all registers, files and folders and documents related to child safety and protection and seeks external expert help as and when required.

GOVERNANCE STRUCTURE...16

2. **PPHF PoSH Committee**: PPHF internal Committee to investigate sexual harassment complaints:

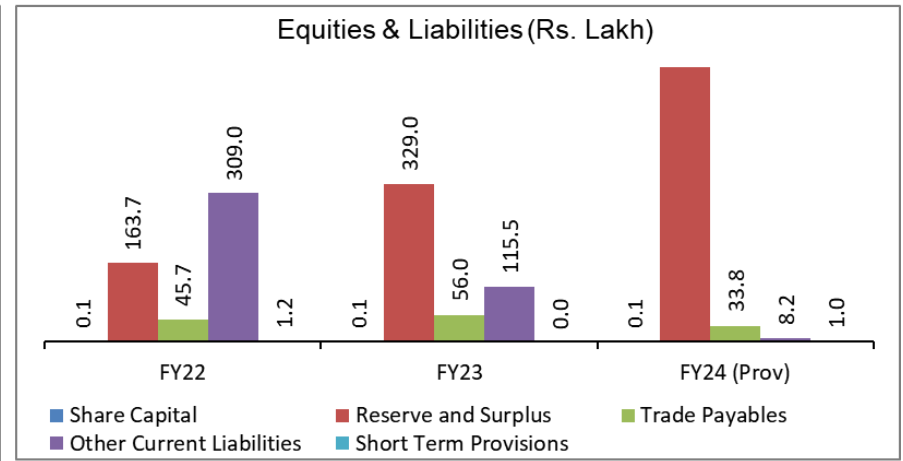
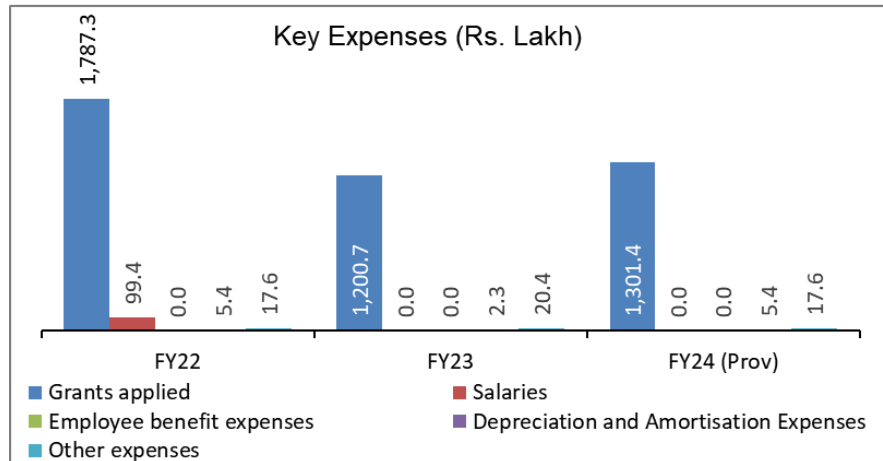
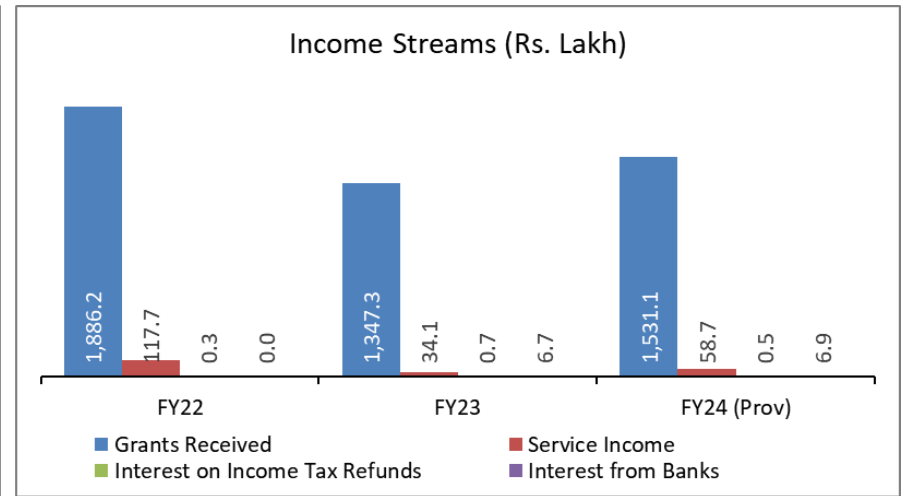
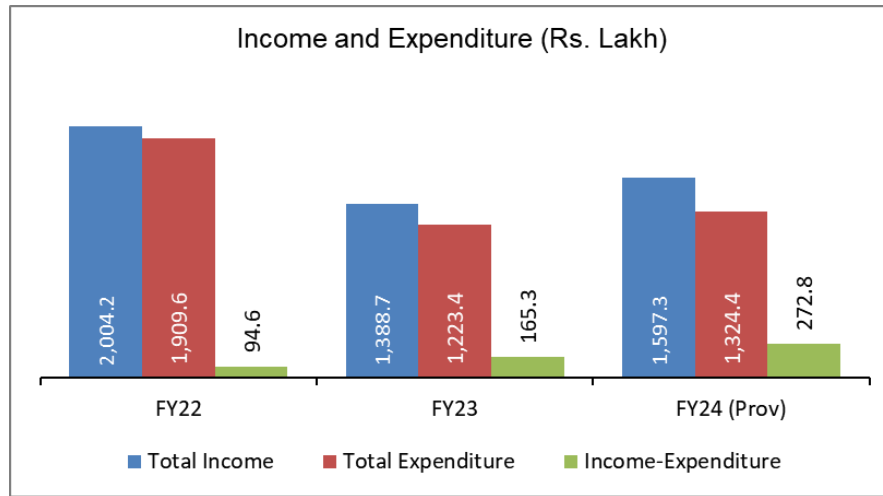
Representative	Committee Member
Human Resources Representative	Varghese C Joseph (Director Operations)
PAC/Board Member	Dr. Neeru Johri
Legal Counsel	Harvinder Singh Bhatia (BHS & Co-legal & compliance)
Employee Representative	Dr. Sona Deshmukh (Director Technical)
Management Representative	Dr. Laxmikanta Palo (CEO)

Source: PPHF

Committee reviews the process and system twice in a year.

FINANCIAL HIGHLIGHTS

FINANCIAL ANALYSIS...1



FINANCIAL ANALYSIS...2

- PPHF income stream mainly consists of grants received, service income, interest on income tax refunds and interest from banks. The grants collection are the primary revenue stream forming 97.0% of the total income in FY23 and 95.9% of the total income in FY24 (Prov.). The service income, interest on income tax refunds and interest from banks formed 2.5%, 0.05% and 0.5% of the total income respectively in FY23 and 3.7%, 0.03% and 0.4% of the total income respectively in FY24 (Prov.).
- The total revenue of PPHF has increased from Rs.654.6 lakh in FY21 to Rs.2,004.2 lakh in FY22; however later it has decreased by -30.7% to Rs.1,388.7 lakh in FY23 due to the impact of COVID-19 on the market and a crisis in CSR funding. As per FY24 (Prov.) financial, the total revenue increased by 15.0% to Rs.1,597.3 lakh. The total revenue has increased at a CAGR of 45.7% from FY21 to FY23.
- The expenditure stream mainly consists of grants applied, salaries, employee benefit expenses, depreciation and amortization expenses and other expenses. Grants applied is major expense which constituted 98.1% of total expenses in FY23 and 98.3% of total expenses in FY24 (Prov.). Other expenses included advertisement, audit fees, bank charges, communication expenses, computer maintenance, membership and subscription, office expenses, postage and courier, printing and stationery, rent, software/ website maintenance, etc. which constituted around 1.7% of total expenses each in FY23 and in FY24 (Prov.) respectively.
- The income utilization ratio of PPHF stood at 88.1% in FY23, which has reduced to 82.9% in FY24 (Prov.).

FINANCIAL ANALYSIS...3

- Total cash & bank balance stood at 84.0% of the total assets in FY23, which is moderate. It has reduced to 64.0% of the total assets in FY24 (Prov.)
- The asset base of the NGO mainly consists of property, plant and equipment, other non-current assets, trade receivables, cash and cash equivalents, short term loans and advances and other current assets.
- PPHF has moderate donor concentration as the donations are received mainly from large corporates. The top 5 donors contributed 64.4% of donations in FY23 and it has increased to 82.2% in FY24 (Prov.).
- The donation contribution has increased from Rs.654.6 lakh in FY21 to Rs.1,381.4 lakh in FY23. The total contribution stood at Rs.1,589.8 lakh in FY24 (Prov.)
- The top 5 donors of PPHF for FY23 are Sanofi India Limited (Rs.517.2 lakh), GE BE Private Limited (Rs.116.5 lakh), Cognizant Foundation (Rs.113.3 lakh), Boston Scientific India Private Limited (Rs.72.0 lakh) and SBI Foundation (Rs.70.0 lakh).
- The top 5 donors of PPHF for FY24 are Sanofi India Limited (Rs.533.3 lakh), HDFC Bank Limited (Rs. 358.9 lakh), SBI Foundation (Rs.201.5 lakh), GE BE Private Limited (Rs.124.9 lakh) and Boston Scientific India Private Limited (Rs.87.8 lakh).
- Survival ratio of PPHF is 166 days in FY24, which is moderate. It has increased from 98 days in FY23.

GRADING RATIONALE

GRADING RATIONALE...1

PPHF is assigned grade 'IRR NGO 3' based on the following observations:

FINANCIAL ASSESSMENT

- PPHF income stream mainly consists of grants received, service income, interest on income tax refunds and interest from banks. The grants collection are the primary revenue stream forming 97.0% of the total income in FY23 and 95.9% of the total income in FY24 (Prov.). The service income, interest on income tax refunds and interest from banks formed 2.5%, 0.05% and 0.5% of the total income respectively in FY23 and 3.7%, 0.03% and 0.4% of the total income respectively in FY24 (Prov.).
- The total revenue of PPHF has increased from Rs.654.6 lakh in FY21 to Rs.2,004.2 lakh in FY22; however later it has decreased by -30.7% to Rs.1,388.7 lakh in FY23 due to the impact of COVID-19 on the market and a crisis in CSR funding. As per FY24 (Prov.) financial, the total revenue increased by 15.0% to Rs.1,597.3 lakh. The total revenue has increased at a CAGR of 45.7% from FY21 to FY23.
- PPHF has moderate donor concentration as the donations are received mainly from large corporates. The top 5 donors contributed 64.4% of donations in FY23 and it has increased to 82.2% in FY24 (Prov.).

Financial Ratios	31-Mar-24 (Prov)	31-Mar-23	31-Mar-22	31-Mar-21
Revenue growth (%)	15.0%	-30.7%	206.2%	NA
Top 5 Donors/ Total Donation	82.2%	64.4%	75.3%	NM
Income Utilization Ratio	82.9%	88.1%	95.3%	95.7%
Cash & Bank/ Total Assets	64.0%	84.0%	81.8%	0.0%
Survival ratio (days)	166	98	31	40
Current Ratio	14.9	2.9	1.4	1.2

- The income utilization ratio of PPHF stood at 88.1% in FY23, which has reduced to 82.9% in FY24 (Prov.).
- Survival ratio of PPHF is 166 days in FY24, which is moderate. It has increased from 98 days in FY23.

GRADING RATIONALE...2

CORPORATE GOVERNANCE

- PPHF is actively managed by Dr. Anoop Khandelwal, Dr. Neeru Johri, Ms. Cheena Malhotra, Dr. Gayatri Mishra Oleti, Mr. Nikhilesh Maity and Dr. Laxmikant Palo. There are no independent board members.
- All 6 board members of PPHF have voting rights. Board meetings were held five times a year in FY24 and every time a resolution is passed. Special meetings can be called at any time as per requirement.
- **Details of Board meetings:** Board meeting for FY24 was held on 1st April 2023, 15th May2023, 4th October 2023, 19th February 2024 and 23rd February 2024. The Governing Board sets the strategic direction and ensures that NGO's work remains responsive to community needs.
- Last AGM was held on 30th September 2023
- **External Auditor:** PPHF is associated with M/s. BHS & Co.. The external auditor does statutory audit on yearly basis and project audit on need basis. The NGO does not have any internal audit system.
- PPHF has adopted various policies, for the smooth running of the NGO including Hiring policy, HR Policy, Travel policy, Financial Policy, Procurement Policy, Whistleblower Policy, Child Protection Policy, Sexual Harassment Policy and Code of Ethic/ Conduct or Anti Bribery Policy.
- PPHF has adopted various committees for smooth running of the NGO including Child Protection Committee (CPC) and PPHF PoSH Committee.

GRADING RATIONALE...3

SYSTEMS & PROCESSES

- Registered on 15th November 2016, PPHF is a Section 8 company (Non-Profit) with Ministry of Corporate Affairs (MCA), GOI, under of the companies Act 2013. PPHF adheres to all statutory compliances like: 12AA, 80G, Darpan ID, CSR1 registration, Six-year Audited financials and ITRs
- **Details of employees/ volunteers:** The NGO has 38 full time employees and hire volunteers on project basis.
- **Details of MIS and reports:** PPHF has robust support system in terms of MIS reporting.
- PPHF has disclosed the names of top donors to the organization. The top 5 donors of PPHF for FY23 are Sanofi India Limited (Rs.517.2 lakh), GE BE Private Limited (Rs.116.5 lakh), Cognizant Foundation (Rs.113.3 lakh), Boston Scientific India Private Limited (Rs.72.0 lakh) and SBI Foundation (Rs.70.0 lakh).
- The top 5 donors of PPHF for FY24 are Sanofi India Limited (Rs.533.3 lakh), HDFC Bank Limited (Rs. 358.9 lakh), SBI Foundation (Rs.201.5 lakh), GE BE Private Limited (Rs.124.9 lakh) and Boston Scientific India Private Limited (Rs.87.8 lakh).
- PPHF has all properties on rent. The NGO only has IT Infrastructure in place for their smooth functioning

GRADING RATIONALE...4

OVERALL ASSESSMENT

- PPHF is actively managed by Dr. Anoop Khandelwal, Dr. Neeru Johri, Ms. Cheena Malhotra, Dr. Gayatri Mishra Oleti, Mr. Nikhilesh Maity and Dr. Laxmikant Palo. There are no independent board members.
- PPHF has adopted various committees for smooth running of the NGO including Child Protection Committee (CPC) and PPHF PoSH Committee.
- PPHF is associated with M/s. BHS & Co.. The external auditor does statutory audit on yearly basis and project audit on need basis. The NGO does not have any internal audit system.
- All 6 board members of PPHF have voting rights. Board meetings were held five times a year in FY24 and every time a resolution is passed. Special meetings can be called at any time as per requirement.
- **Details of Board meetings:** Board meeting for FY24 was held on 1st April 2023, 15th May2023, 4th October 2023, 19th February 2024 and 23rd February 2024. The Governing Board sets the strategic direction and ensures that NGO's work remains responsive to community needs. Last AGM was held on 30th September 2023
- The grading recognizes PPHF efforts towards the sustainable solutions for public health challenges including health system strengthening, non-communicable diseases (NCDs), women, adolescent and child health, nutrition, infectious diseases, environmental health, integrated development for wellbeing and emergency health and disaster response. The NGO has impacted over 33 mn people through more than 50 partnership across 20+ states in more than 60 districts.

ANNEXURES

ANNEXURES...1

FINANCIALS – PROFIT & LOSS STATEMENT

Profit & Loss Statement

Units	(Rs. Lakh)			
For the Year ended	31-Mar-24 (Prov)	31-Mar-23	31-Mar-22	31-Mar-21
No of Months	12	12	12	12
Income				
Grants Received	1,531.1	1,347.3	1,886.2	576.1
Service Income	58.7	34.1	117.7	78.5
Interest on Income Tax Refunds	0.5	0.7	0.3	0.0
Interest from Banks	6.9	6.7	0.0	0.0
Total Income	1,597.3	1,388.7	2,004.2	654.6
Expenditure				
Grants applied	1,301.4	1,200.7	1,787.3	493.3
Salaries	0.0	0.0	99.4	114.0
Employee benefit expenses	0.0	0.0	0.0	1.9
Depreciation and Amortisation Expenses	0.9	2.3	5.4	0.2
Other expenses	22.1	20.4	17.6	17.0
Total Expenditure	1,324.4	1,223.4	1,909.6	626.4
Excess of Income over Expenditure	272.8	165.3	94.6	28.1

ANNEXURES...2

FINANCIALS – BALANCE SHEET STATEMENT

Balance Sheet - Equities and Liabilities				
Units	(Rs. Lakh)			
As on:	31-Mar-24 (Prov)	31-Mar-23	31-Mar-22	31-Mar-21
Reserves & Surplus				
Share Capital	0.1	0.1	0.1	0.1
Reserve and Surplus	601.8	329.0	163.7	69.1
Total	601.9	329.1	163.8	69.2
Current Liabilities				
Trade Payables	33.8	56.0	45.7	4.3
Other Current Liabilities	8.2	115.5	309.0	398.7
Short Term Provisions	1.0	0.0	1.2	0.0
Total Current Liabilities	43.0	171.6	355.9	403.0
Equities and Liabilities	644.9	500.7	519.6	472.2
Balance Sheet - Assets				
Units	(Rs. Lakh)			
As on:	31-Mar-24 (Prov)	31-Mar-23	31-Mar-22	31-Mar-21
Fixed Assets				
Property, Plant and Equipment	0.7	1.5	3.8	0.5
Other Non-Current Assets	2.0	2.0	1.3	1.3
Total Fixed Assets	2.7	3.6	5.1	1.8
Current Assets				
Trade Receivables	7.0	7.0	0.0	0.0
Cash and Cash Equivalents	412.6	420.4	425.1	432.8
Short Term Loans and Advances	219.5	48.6	61.6	27.3
Other Current Assets	3.1	21.1	27.9	10.4
Total Current assets	642.2	497.1	514.5	470.4
Total Asset	644.9	500.7	519.6	472.2

Reproduction or retransmission in whole or in part is prohibited except by permission. All rights reserved. In issuing and maintaining its gradings and in making other reports (including forecast information), FSIAPL relies on factual information it receives from issuers and underwriters and from other sources FSIAPL believes to be credible. FSIAPL conducts a reasonable investigation of the factual information relied upon by it in accordance with its gradings methodology, and obtains reasonable verification of that information from independent sources, to the extent such sources are available for a given security or in a given jurisdiction. The manner of FSIAPL's factual investigation and the scope of the third-party verification it obtains will vary depending on the nature of the graded security and its issuer, the requirements and practices in the jurisdiction in which the graded security is offered and sold and/or the issuer is located, the availability and nature of relevant public information, access to the management of the issuer and its advisers, the availability of pre-existing third-party verifications such as audit reports, agreed-upon procedures letters, appraisals, actuarial reports, engineering reports, legal opinions and other reports provided by third parties, the availability of independent and competent third-party verification sources with respect to the particular security or in the particular jurisdiction of the issuer, and a variety of other factors. Users of FSIAPL's gradings and reports should understand that neither an enhanced factual investigation nor any third-party verification can ensure that all of the information FSIAPL relies on in connection with a grading or a report will be accurate and complete. Ultimately, the issuer and its advisers are responsible for the accuracy of the information they provide to FSIAPL and to the market in offering documents and other reports. In issuing its gradings and its reports, FSIAPL must rely on the work of experts, including independent auditors with respect to financial statements and attorneys with respect to legal and tax matters. Further, gradings and forecasts of financial and other information are inherently forward-looking and embody assumptions and predictions about future events that by their nature cannot be verified as facts. As a result, despite any verification of current facts, gradings and forecasts can be affected by future events or conditions that were not anticipated at the time a grading or forecast was issued or affirmed.

The information in this report is provided "as is" without any representation or warranty of any kind, and FSIAPL does not represent or warrant that the report or any of its contents will meet any of the requirements of a recipient of the report. An FSIAPL grading is an opinion and this opinion and reports made by FSIAPL are based on established criteria and methodologies that FSIAPL is continuously evaluating and updating. Therefore, gradings and reports are the collective work product of FSIAPL and no individual, or group of individuals, is solely responsible for a grading or a report. The grading does not address the risk of loss due to risks other than credit risk, unless such risk is specifically mentioned. FSIAPL is not engaged in the offer or sale of any security. All FSIAPL reports have shared authorship. Individuals identified in a FSIAPL report were involved in, but are not solely responsible for, the opinions stated therein. The individuals are named for contact purposes only. A report providing FSIAPL grading is neither a prospectus nor a substitute for the information assembled, verified and presented to investors by the issuer and its agents in connection with the sale of the securities. Gradings may be changed or withdrawn at any time for any reason in the sole discretion of FSIAPL. FSIAPL does not provide investment advice of any sort. Gradings are not a recommendation to buy, sell, or hold any security. Gradings do not comment on the adequacy of market price, the suitability of any security for a particular investor, or the tax-exempt nature or taxability of payments made in respect to any security. FSIAPL receives fees from issuers, insurers, guarantors, other obligors, and underwriters for grading securities. Such fees generally vary from US\$1,000 to US\$750,000 (or the applicable currency equivalent) per issue. In certain cases, FSIAPL will grade all or a number of issues issued by a particular issuer, or insured or guaranteed by a particular insurer or guarantor, for a single annual fee. Such fees are expected to vary from US\$10,000 to US\$1,500,000 (or the applicable currency equivalent). The assignment, publication, or dissemination of a grading by FSIAPL shall not constitute a consent by FSIAPL to use its name as an expert in connection with any registration statement filed under the United States securities laws, the Financial Services and Markets Act of 2000 of the United Kingdom, or the securities laws of any particular jurisdiction. Due to the relative efficiency of electronic publishing and distribution, FSIAPL research may be available to electronic subscribers up to three days earlier than to print subscribers.

Mumbai

Wockhardt Towers, 4th Floor

West Wing, Bandra Kurla Complex

Bandra East

Mumbai, Maharashtra 400 051

