



SBI Sanjeevani - Clinic On Wheels

Balangir, Dhenkanal and Nuapada districts of Odisha

Overview

SBI Sanjeevani – Clinic on Wheels, an initiative implemented by People to People Health Foundation (PPHF) under CSR support from SBI Foundation, delivers comprehensive primary healthcare services to underserved communities in 60 remote villages across Balangir, Dhenkanal, and Nuapada districts of Odisha. Through regular Mobile Outpatients Department (MOPD) sessions, monthly awareness camps, quarterly Swachh Bharat Abhiyan drives, and specialized health camps, the program ensures access to preventive and curative care and increase the access to the last mile service delivery. Each unit is staffed with a doctor, pharmacist, lab technician, ANM, and driver-cum-attendant. Leveraging over a decade of healthcare experience, the initiative adopts a multi-sectoral approach, working with stakeholders to address disrupted healthcare access and promote early detection and timely treatment.

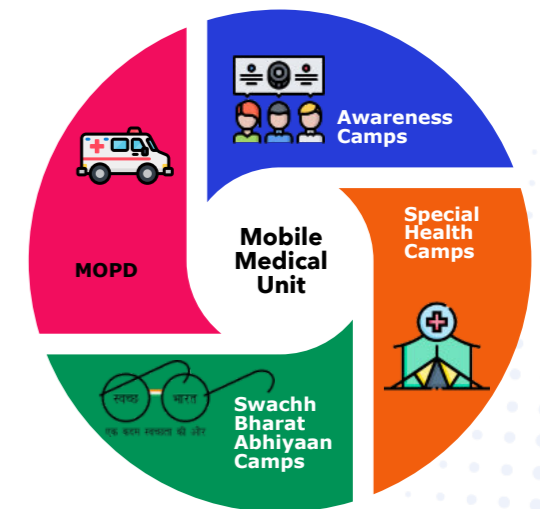
Goal

To strengthen primary healthcare and increase last-mile access by delivering free doorstep services through MOPD, thereby supporting the Government's efforts.

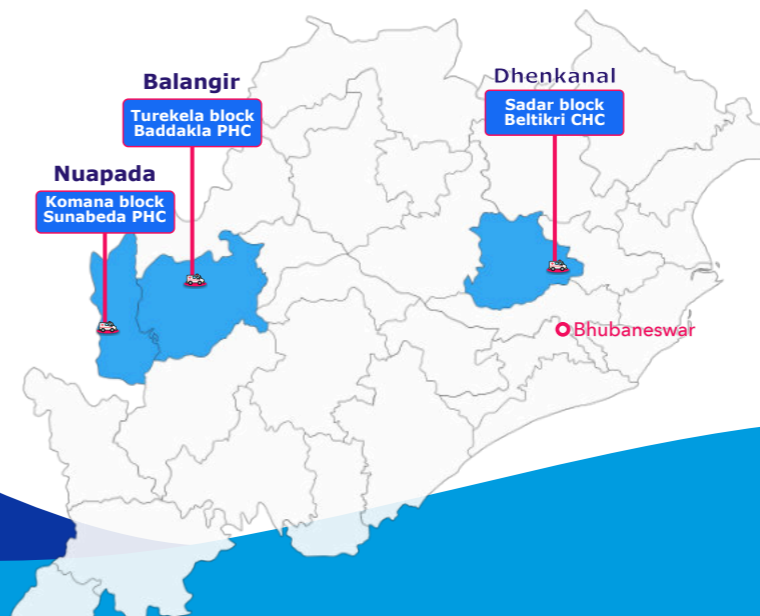
Objective

- Enhance access to primary healthcare at the community level through village-based OPD consultations provided by MMUs.
- Improve the overall health seeking behavior of target populations through focused interventions and service delivery.
- Conduct specialized health camps on a quarterly basis to address specific community health needs.
- Enhancing community awareness through targeted awareness drives and Swachh Bharat Abhiyan awareness camps.

Major Activities



Implementation Geography:



- The project is implemented in 60 villages spread across three districts of Odisha.
- Baddakia PHC, Turekela block, Balangir
 - Sunabeda PHC, Komana block, Nuapada
 - Beltikri CHC, Sadar block, Dhenkanal

About PPHF

We are a global non-profit organization working towards transforming lives for improved health and well-being through locally driven solutions. We have worked in more than 20 states of India with an aim to build the skills of healthcare providers, strengthen management capacity on sustainable solutions for public health challenges. These include: Health System Strengthening | Non-Communicable Diseases | Women, Adolescent and Child Health | Nutrition | Infectious Diseases | Environmental Health | Integrated Development Program | Emergency Health and Disaster Response.

Contact us:

People to People Health Foundation

Second Floor, E-45, Lajpat Nagar-III, New Delhi-110 024
Phone: 011-35121441 | Mobile: +91 98719 50708
E-mail: connect@pphfglobal.org
Web: www.pphfglobal.org



PPHF
pphfglobal.org

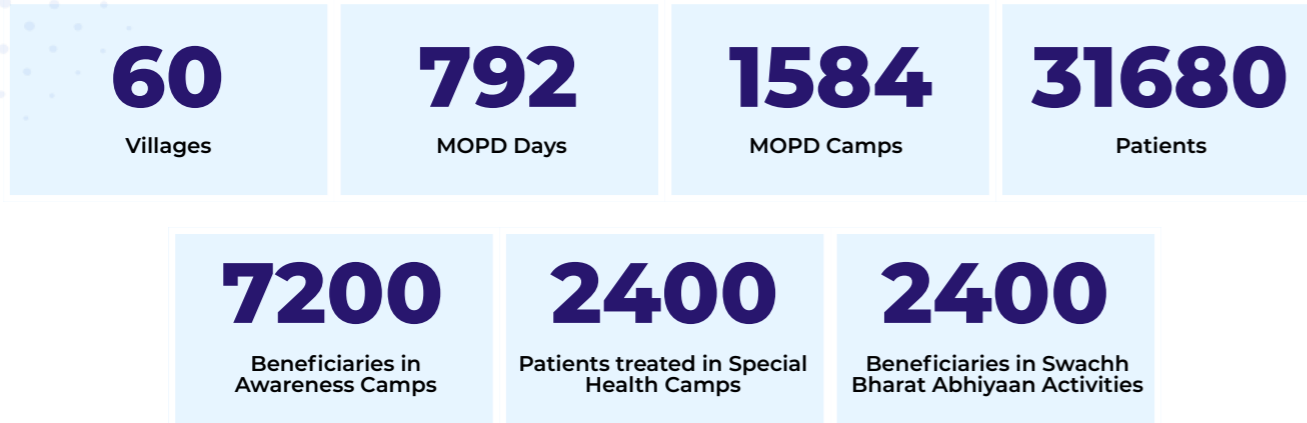
This project contributes to:



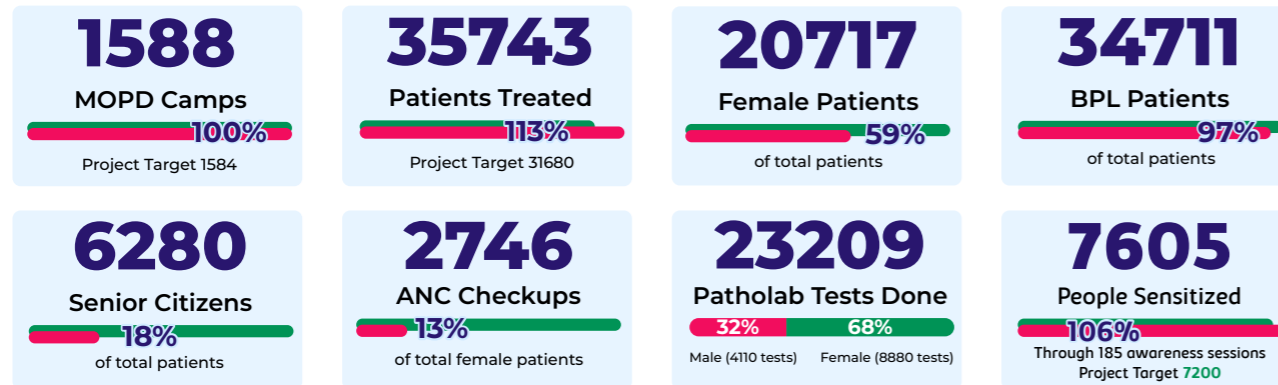
Year 1 (March 2024 - May 2025)

The project was initiated in March 2024, and the MMU deployment started in August 2024. The first year of this project concluded in May 2025

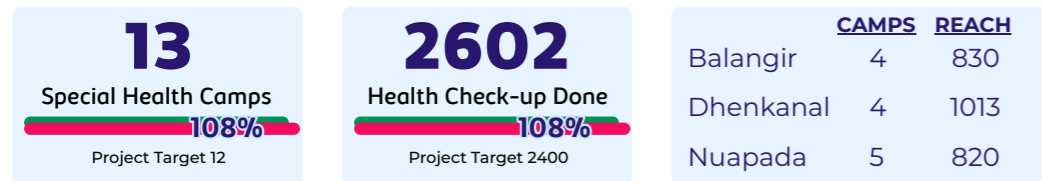
Project Targets (Annual)



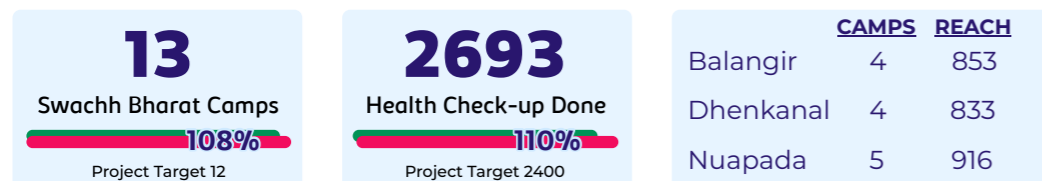
Impact Numbers (Year 1):



Special Health Camps



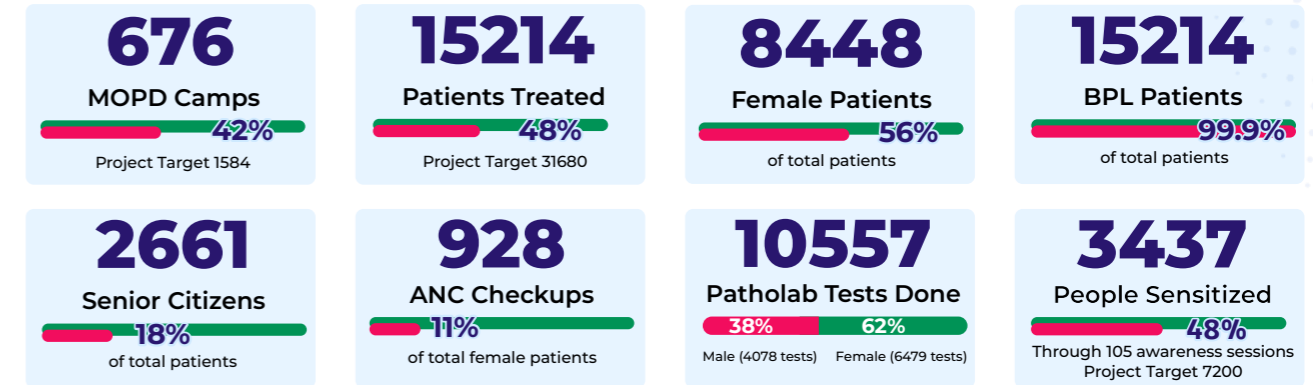
Swachh Bharat Abhiyaan Awareness Camps



Year 2 & 3 (June 2025 to May 2027)

Subsequently the project is extended for two more years, starting from June 2025 till May 2027.

Progress as on 31 Oct 2025 (Year 2):



Implementation Approach:

The project adopts a multi-pronged approach to strengthen primary healthcare service delivery, which includes:

- Operation of Mobile Medical Units (MMUs) with fixed schedules, ensuring each village is visited at least twice a month.
- Delivers essential primary healthcare services to underserved populations to improve access.
- Establishes linkages with nearby government facilities to facilitate specialised care.
- Strengthens referral systems for timely access to higher-level healthcare.
- Promotes an essential health intervention package to encourage adoption of key health services and practices.
- Conducts community outreach and health awareness sessions to increase engagement.
- Improves health-seeking behaviour among women, children, and the elderly through sustained interventions.
- Implements Behaviour Change Communication (BCC) activities to promote preventive healthcare and generate demand.

