

# SBI Sanjeevani Clinic on Wheels

An initiative by PPHF, SBI Foundation and SBI Cap Securities in Rajasthan

## Overview

SBI Sanjeevani Clinic on Wheels provides health services to ensure better access and timely help to the underserved communities at their doorstep in the difficult-to-reach 40 villages of Kishanganj and Shahabad Block of Baran District in Rajasthan. Apart from Mobile OPDs (MOPD), the project conducts monthly awareness camps and quarterly Specialised health and Swachha Bharat camps to empower communities with awareness, screening and early detection. The Unit is accompanied by a dedicated medical team consisting of a Doctor, Lab Technician, Pharmacist and Driver.

## Goal

SBI Sanjeevani Clinic on Wheels aims to provide free door-step health services to hard-to-reach communities by providing early detection of serious illnesses and increasing community awareness.

## Objectives

- To provide primary, preventive, diagnostic and referral health services at the door step of the people in the un-served/underserved areas.
- To co-ordinate with the District Health Systems to achieve improvement in SDGs like to ensure healthy lives; to reduce inequality; to improve life expectancy, etc.

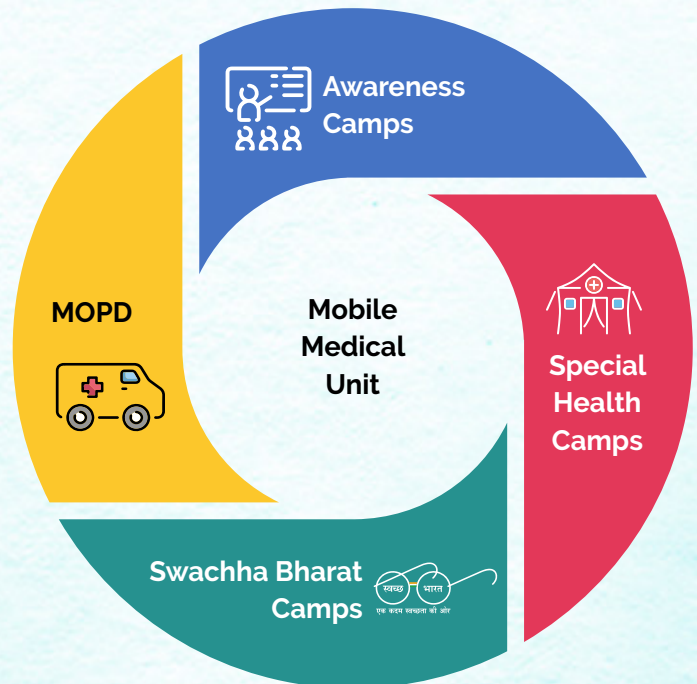
## Implementation Geography

Kishanganj and Shahabad Block of District Baran, Rajasthan

## Target Beneficiaries

General population of remote villages of District Baran, Rajasthan

## Major Activities



## About PPHF

We are a global health non-profit organization working towards transforming lives for improved health and well-being through locally driven solutions. We have worked in more than 20 states of India with an aim to build the skills of healthcare providers, strengthen management capacity on sustainable solutions for public health challenges. These include: Health System Strengthening | Non-Communicable Diseases | Women, Adolescent and Child Health | Nutrition | Infectious Diseases | Environmental Health | Integrated Development Program | Emergency Health and Disaster Response

## Contact us:

### People to People Health Foundation

K-40, Third Floor, Jangpura Extension, New Delhi 110014  
Phone: 011-35121441 | Mobile: +91 98719 50708  
E-mail: connect@pphfglobal.org | Web: www.pphfglobal.org

